



2015  
**FUSION+HYBRID**  
**FUSION ENERGI**



Go Further

Thank you for your interest in the **2015 Ford Fusion**. Included in this brochure you'll find information about:

**FUEL EFFICIENCY:** The Ford Fusion is designed with fuel efficiency as a high priority, starting with its boldly distinctive aerodynamic design and continuing with powerplants coupled with transmissions carefully engineered to operate on as little gasoline as necessary.

**TECHNOLOGY:** The technology features in the Fusion help keep you connected – with the world and with your car. The available industry-first SYNC® with MyFord Touch®, for example, lets you operate a variety of features while keeping your hands on the wheel.

**ENGINEERING:** Choose your Fusion power: standard 2.5L Duratec® I-4 and available 1.5L and 2.0L EcoBoost engines with wide-ratio 6-speed automatic; plus 2.0L I-4 Atkinson-cycle I-4 and electric motor in the Fusion Hybrid and Fusion Energi Plug-in Hybrid models.

**DESIGN:** With its athletic lines and sleek silhouette, the Fusion conveys a sense of agility. The bold, hexagonal grille gives the Fusion a distinctive look, while low-profile laser-cut projector headlamps and LED taillamps display intelligent technology.

## DEALER INFORMATION

Find up-to-date contact information for your local Ford dealer. To visit a local dealer Web site and view a map of their location, click on one of the links below.

<a href="#">Perry Ford of National City</a>	2050 National City Blvd. National City, CA 91950	(844) 339-2256
<a href="#">Penske Ford</a>	8970 La Mesa Boulevard La Mesa, CA 91942	(619) 464-7777
<a href="#">Kearny Pearson Ford</a>	7303 Clairemont Mesa Blvd San Diego, CA 92111	(858) 715-3400
<a href="#">Mossy Ford</a>	4570 Mission Bay Dr San Diego, CA 92109	(858) 205-1722

**Get an inside look at the benefits of Ford ownership.** Manage important vehicle information 24/7, whenever you need it. It's free to register for personalized maintenance schedules, incentives and offers, and much more. You can even access your Ford Credit information and online bill payment services. Log on to [www.owner.ford.com](http://www.owner.ford.com) to get started.



Captivating.  
By design.



Click to see how Fusion  
makes every drive dynamic.



*Titanium. White Platinum Tri-coat Metallic. Available equipment.*

2015 **FUSION+HYBRID**  
**FUSION ENERGY**  
ford.com





## Inspiring. From every angle.

Tour  
the Fusion  
gallery



Award-winning design graces every 2015 Ford Fusion. From the elegant grille to radiant LED taillamps, its sculpted lines and swept-back silhouette prove irresistible to the eye. Inside, a high degree of craftsmanship extends even to the lighted, lined and lockable glove compartment.

**Fusion empowers you** in sophisticated style. The power of choice is expressed in gas, hybrid and plug-in hybrid powertrains, letting you choose what best fits your active lifestyle. An advanced array of driver-assist technologies<sup>1</sup> offers additional convenience.

### Gasoline power.

A standard 2.5L gasoline engine powers Fusion. To enhance both performance and efficiency, 2 EcoBoost<sup>®</sup> engines are available. The choice is yours.

### Hybrid efficiency.

Fusion Hybrid is powered by a combination electric motor and 2.0L Atkinson-cycle gasoline engine. While driving, its state-of-the-art lithium-ion battery is recharged by the engine and regenerative braking.

### Plug-in flexibility.

Utilizing the same powertrain as Fusion Hybrid, Fusion Energi Plug-In Hybrid gives you the additional option of plugging in or not. Its LED-illuminated charge port lets you know when charging is complete.

*Titanium. White Platinum Tri-coat Metallic. Fusion Energi Titanium. Ruby Red Tinted Clearcoat Metallic. Hybrid SE. Magnetic. Available equipment.*

<sup>1</sup>Available feature.

2015 **FUSION+HYBRID**  
**FUSION ENERGI**  
ford.com

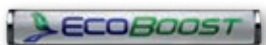


## Motivating. With powerful gas choices.

Equip your gasoline-powered Fusion model with a standard 2.5L iVCT engine or one of 2 EcoBoost® turbocharged, direct-injection powerplants.<sup>1</sup>

**With robust low-end torque** and virtually no turbo lag, EcoBoost technology squeezes maximum power from each drop of fuel. Along with impressive efficiency. Get 181 hp<sup>2</sup> from the 1.5L EcoBoost<sup>1</sup> with 6-speed SelectShift® automatic transmission and Auto Start-Stop,<sup>1</sup> plus an EPA-estimated rating of 37 mpg hwy.<sup>3</sup>

**For performance-minded drivers**, a 240-hp<sup>2</sup> 2.0L EcoBoost<sup>1</sup> teams with a SelectShift automatic<sup>1</sup> whose 6 speeds can be paddle shifted from the steering wheel. With Fusion, the choice is always yours. As you accelerate through corners, Torque Vectoring Control (standard on all models) enhances your hold on any road.



### 2.5L iVCT I-4

6-speed SelectShift automatic  
175 horsepower

### 1.5L EcoBoost I-4

6-speed SelectShift automatic  
with Auto Start-Stop<sup>1</sup>  
181 horsepower<sup>2</sup>

### 2.0L EcoBoost I-4

6-speed SelectShift automatic  
240 horsepower<sup>2</sup>

SE. Bronze Fire Tinted Clearcoat Metallic. Available equipment.

<sup>1</sup>Available feature. <sup>2</sup>Using 93-octane fuel. <sup>3</sup>EPA-estimated rating: 25 city/37 hwy/29 combined mpg, 1.5L EcoBoost automatic with Auto Start-Stop. Actual mileage will vary.

2015 **FUSION+HYBRID**  
**FUSION ENERGY**  
ford.com





Dramatization. Actual mileage will vary.

## Efficient! With state-of-the-art hybrid technology.

Using both gas and electric power, Fusion Hybrid delivers exceptional ride and handling as it seamlessly switches between its electric traction motor and 2.0L Atkinson-cycle gasoline I-4 engine to help maximize fuel efficiency. In fact, it can operate in electric mode at speeds up to 85 mph, due to a state-of-the-art lithium-ion battery that powers the electric traction motor.

### See Hybrid in action



**To drive more effectively,** vibrant “Efficiency Leaves” grow on the Fusion Hybrid SmartGauge® with EcoGuide instrument cluster. The higher your driving efficiency, the more lush your green leaves – giving you instant feedback.

### **Recharging the battery as you drive,**

the Regenerative Braking System captures over 90% of the brake energy and uses it to help maximize your mileage. Even when braking, you’re moving forward in Fusion Hybrid.



Hybrid SE. Magnetic. Available equipment.

<sup>1</sup>EPA-estimated rating: 44 city/41 hwy/42 combined mpg, Hybrid. Actual mileage will vary.

2015 **FUSION+HYBRID**  
**FUSION ENERGY**  
ford.com





## Flexible. With the option to plug in.

Or not. With a higher-capacity, state-of-the-art lithium-ion battery and 2.0L Atkinson-cycle gasoline engine, Fusion Energi Plug-In Hybrid gives you the additional option of plugging in. While you drive, it decides whether to run on battery power or to turn on its gas engine as needed.

**An EPA-estimated** 95 city MPGe,<sup>1</sup> a gas-plus-electric driving range of 550 miles,<sup>2</sup> and an all-electric driving range of 19 miles.<sup>2</sup> Fusion Energi may run all-electric and use no gasoline at all on short commutes – even while cruising at highway speeds.

Discover  
plug-in  
flexibility



**Recharge at home** in about 7 hours using its LED-illuminated charge port (shown below) and the standard 120V convenience charge cord. Shorten that time to about 2.5 hours using a Ford-recommended AeroVironment™ 240V home charging station.<sup>3</sup> This UL-listed, weather-resistant portable charging station is easy to take with you if you decide to relocate. A hard-wired station is also available for your convenience.

**Easily monitor and schedule charging**, at home or at one of the growing number of public charging stations near you, with our MyFord® Mobile app<sup>4</sup> (shown below) and website (myfordmobile.com). Both feature a charging station locator powered by PlugShare.<sup>®</sup>

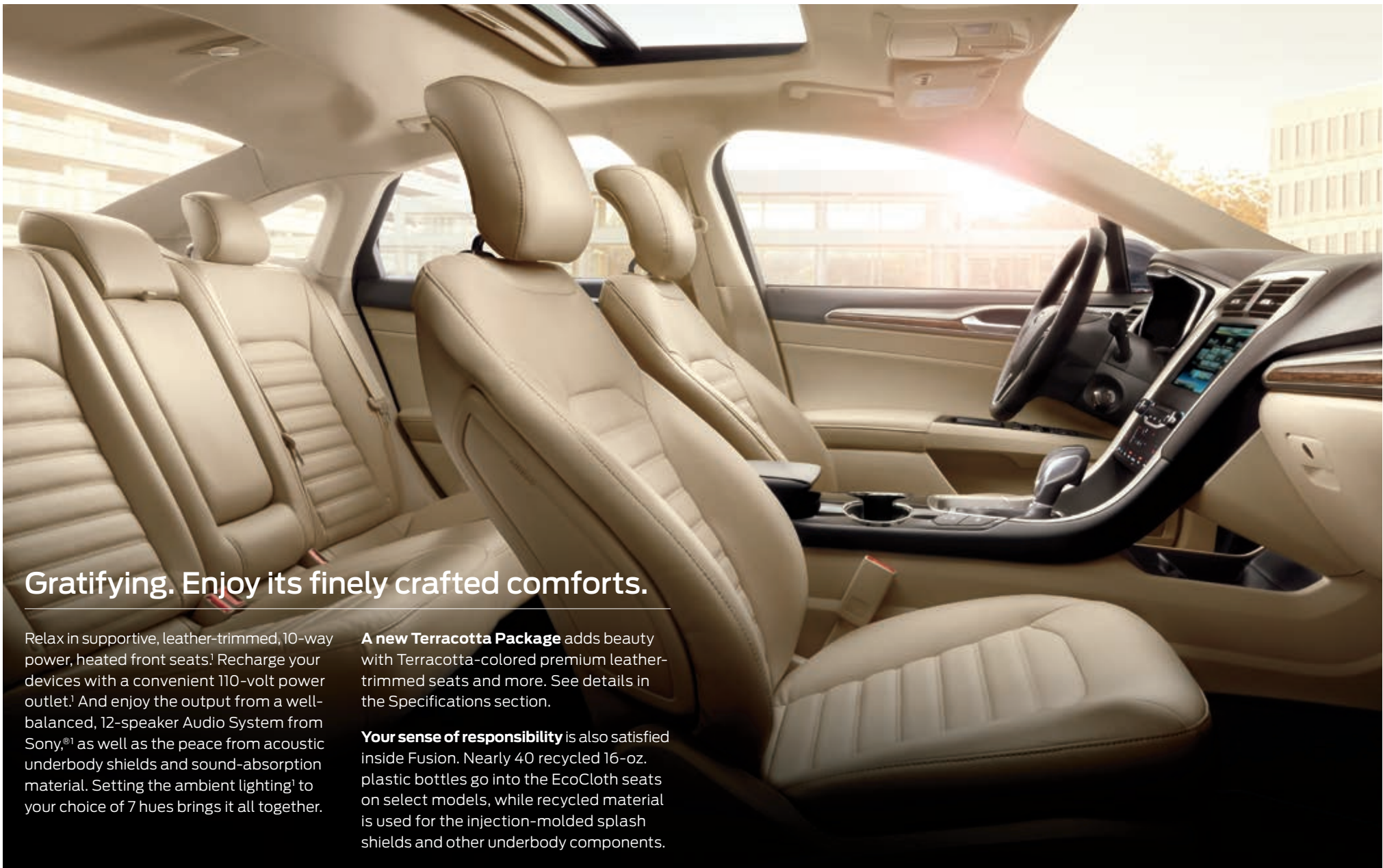


*Fusion Energi Titanium. Ruby Red Tinted Clearcoat Metallic.  
Available equipment.*



2015 **FUSION-HYBRID**  
**FUSION ENERGI**  
ford.com

<sup>1</sup>EPA-estimated rating of 95 city/81 hwy/88 combined MPGe. Actual mileage will vary. MPGe is the EPA equivalent measure of gasoline fuel efficiency for electric mode operation. <sup>2</sup>EPA-estimated rating of 40 city/36 hwy/38 combined mpg, 14.0-gallon fuel tank; 19 miles electric. Range calculation based on [www.fueleconomy.gov](http://www.fueleconomy.gov). Actual range varies with conditions such as external elements, driving behaviors, vehicle maintenance and lithium-ion battery age. <sup>3</sup>Available feature. To begin the process, call 1-888-219-6747 or visit [evsolutions.com/ford](http://evsolutions.com/ford). Charging stations are available with or without full installation services by AeroVironment. <sup>4</sup>MyFord Mobile subscription complimentary for 5 years from the vehicle sale date as recorded by the dealer. Subscription fees apply after 5 years. MyFord Mobile requires a compatible 2G independent cellular network. Evolving technology and cellular networks may affect future availability and functionality.



## Gratifying. Enjoy its finely crafted comforts.

Relax in supportive, leather-trimmed, 10-way power, heated front seats.<sup>1</sup> Recharge your devices with a convenient 110-volt power outlet.<sup>1</sup> And enjoy the output from a well-balanced, 12-speaker Audio System from Sony,<sup>®1</sup> as well as the peace from acoustic underbody shields and sound-absorption material. Setting the ambient lighting<sup>1</sup> to your choice of 7 hues brings it all together.

**A new Terracotta Package** adds beauty with Terracotta-colored premium leather-trimmed seats and more. See details in the Specifications section.

**Your sense of responsibility** is also satisfied inside Fusion. Nearly 40 recycled 16-oz. plastic bottles go into the EcoCloth seats on select models, while recycled material is used for the injection-molded splash shields and other underbody components.



SE. Dune leather trim. Luxury Package. Available equipment.

<sup>1</sup>Available feature.

2015 **FUSION+HYBRID**  
**FUSION ENERGY**  
ford.com





## Responsive. Just say a command.

Then get connected. Standard voice-activated Ford SYNC®<sup>1</sup> with 911 Assist® delivers hands-free calls, Bluetooth®-streaming music and more. Once paired, it can download contacts and play music from your smartphone. It can also access your MP3 player, USB or iPod.® Just touch a button on the steering wheel and say things like “Call: Ashley at home” or “Play playlist: Rock.”

**Control apps by voice too**, such as Pandora,® iHeartAuto,™ SiriusXM® and more with SYNC AppLink™<sup>2</sup> (on select models).

**To better connect** with friends, family, directions and more, sound absorption material in Fusion helps keep noise to a minimum, while active noise cancellation in Fusion Hybrid and Fusion Energi uses the audio system to minimize road noise. SYNC. Say the word.



| SYNC

*Titanium. Charcoal Black leather trim with perforated inserts. Available equipment.*

<sup>1</sup>Driving while distracted can result in loss of vehicle control. Only use mobile phones and other devices, even with voice commands, when it is safe to do so. Not all features are compatible with all phones. <sup>2</sup>Available feature. SYNC AppLink is available on select models and compatible with select smartphone platforms. SYNC AppLink is not compatible with MyFord Touch®. Commands may vary by phone and AppLink software.

2015 **FUSION+HYBRID**  
**FUSION ENERGI**  
ford.com





## Interactive. With quick response.

The 8" color LCD touch screen on SYNC® with MyFord Touch®<sup>1</sup> can help you on every drive.

**Answer a call** from your paired phone by pressing "Accept" on the screen. Hear a new favorite tune over the radio? With HD Radio™ Technology<sup>2</sup> and iTunes® tagging, simply touch the TAG shopping cart icon when the song is playing to mark it for purchase later.



**SiriusXM®<sup>2</sup>** lets you enjoy commercial-free music, plus sports, news, entertainment, and every premium channel with your 6-month All Access trial subscription.<sup>3</sup> The voice-activated Navigation System<sup>2</sup> also includes a 5-year subscription to SiriusXM Traffic and Travel Link® services.<sup>2</sup> These features provide detailed traffic information on accidents, construction and road closures, plus local and national weather forecasts, fuel prices and more.



*Titanium. SYNC with MyFord Touch. Available equipment.*



2015 **FUSION-HYBRID**  
**FUSION ENERGY**  
ford.com

<sup>1</sup>Available feature. Driving while distracted can result in loss of vehicle control. Only use SYNC/MyFord Touch/other devices, even with voice commands, when it is safe to do so. Some features may be locked out while the vehicle is in gear. Not all features are compatible with all phones. <sup>2</sup>Available feature. <sup>3</sup>Trial subscription also includes access to SiriusXM Internet Radio on your computer, smartphone or tablet. Satellite and Internet Radio lineups vary slightly.



See how  
it all works



## Advanced. To help locate your sweet spot.

Fusion can help in traffic, with parallel parking and more.

**Maintain your lane** with help from our Lane-Keeping System.<sup>1,2</sup> It can detect lane markings with a forward-facing camera and send vibration pulses to the steering wheel. If needed, it can apply steering torque to prompt you to steer back toward center.

**Make parallel parking easier** with active park assist.<sup>1</sup> This system not only helps you find a spot, it actually steers the vehicle into place while you control the gear shifter, and brake and accelerator pedals.

**Get a heads-up** from adaptive cruise control and collision warning with brake support.<sup>1</sup> This system helps maintain your choice of 4 preset gaps from the vehicle in front of you and can alert you to a potential collision. If one is detected, it flashes a warning on the windshield, sounds an alarm, and preps the braking system to help.

**Stay alert to traffic detected in blind spots** as you drive forward, or traffic nearing either side of the vehicle as you slowly back up, thanks to BLIS® (Blind Spot Information System) with cross-traffic alert.<sup>1</sup> It helps warn you using lights embedded in the sideview mirrors.<sup>3</sup>

<sup>1</sup>Available feature. Driver-assist features are supplemental and do not replace the driver's judgment.

<sup>2</sup>Lane-Keeping System does not control steering. <sup>3</sup>BLIS replaces standard integrated blind spot mirrors.



## Stable. When it's needed most.

Rest assured that Fusion is engineered to bring stability to your journey. Its achievements include both the government's highest possible safety rating and the highest possible safety rating from the Insurance Institute for Highway Safety (IIHS) when equipped with available collision warning with brake support.

**8 standard airbags** join inflatable 2nd-row safety belts<sup>1</sup> (in the rear outboard seating positions) inside. Underneath, AdvanceTrac<sup>®</sup> electronic stability control<sup>2</sup> helps keep things stable, particularly in inclement weather. And Intelligent all-wheel drive (AWD)<sup>1</sup> balances torque between the front and rear wheels to enhance handling and maximize traction, typically before wheelslip can even occur.



SAFETY RATING<sup>3</sup>

2014 IIHS



TOP SAFETY PICK+

INFLATABLE



2ND-ROW SAFETY BELTS<sup>1</sup>

*Titanium. White Platinum Tri-coat Metallic. Available equipment.*

<sup>1</sup>Available feature. <sup>2</sup>Remember that even advanced technology cannot overcome the laws of physics. It's always possible to lose control of a vehicle due to inappropriate driver input for the conditions.

<sup>3</sup>Ratings based on Overall and Frontal Crash tests. Government 5-star Safety Ratings are part of the U.S. Department of Transportation's New Car Assessment Program ([www.safercar.gov](http://www.safercar.gov)).

2015 **FUSION+HYBRID**  
**FUSION ENERGY**  
ford.com



# Fusion Specifications



## Engines/EPA-Estimated Ratings & Dimensions

### 2.5L iVCT I-4

175 hp @ 6,000 rpm<sup>1</sup>  
175 lb.-ft. of torque @ 4,500 rpm  
6-speed SelectShift® automatic  
22 city/34 hwy/26 combined mpg

### 1.5L EcoBoost® I-4

181 hp @ 6,000 rpm<sup>1</sup>  
185 lb.-ft. of torque @ 4,320 rpm<sup>1</sup>  
6-speed SelectShift automatic  
24 city/36 hwy/28 combined mpg  
6-speed SelectShift automatic  
with Auto Start-Stop  
25 city/37 hwy/29 combined mpg

### 2.0L EcoBoost I-4

240 hp @ 5,550 rpm<sup>1</sup>  
270 lb.-ft. of torque @ 3,000 rpm<sup>1</sup>  
6-speed SelectShift automatic  
FWD 22 city/33 hwy/26 combined mpg  
AWD 22 city/31 hwy/25 combined mpg

### 2.0L iVCT Atkinson-Cycle I-4 Hybrid with Permanent-Magnet AC-Synchronous Electric Motor

Total system net horsepower: 188  
Electronically controlled continuously variable transmission (eCVT)  
44 city/41 hwy/42 combined mpg

### 2.0L iVCT Atkinson-Cycle I-4 Plug-In Hybrid with Permanent-Magnet AC-Synchronous Electric Motor

Total system net horsepower:  
195 charge depletion mode  
188 charge sustain mode  
Electronically controlled continuously variable transmission (eCVT)  
40 city/36 hwy/38 combined mpg (gasoline only)  
95 city/81 hwy/88 combined MPGe

	Fusion, Hybrid/Fusion Energi
<b>Exterior</b>	
Wheelbase	112.2"
Length	191.8"
Height	58.2"/58.0"
Width – Mirrors folded	75.2"
Width – Including mirrors	83.5"
<b>Interior</b>	Front/Rear
Head room	39.2"/37.8"
Shoulder room	57.8"/56.9"
Hip room	55.0"/54.4"
Leg room	44.3"/38.3"
<b>Capacities (cu. ft.)</b>	Fusion, Hybrid/Fusion Energi
Passenger volume	102.8
Luggage capacity	16.0, 12.0/8.2
Total interior volume	118.8, 114.8/111.0
Fuel tank (gal.)	
FWD/AWD	16.5/17.5
Hybrid/Fusion Energi	13.5/14.0

## Standard Features

### Mechanical

4-wheel disc Anti-Lock Brake System (ABS)  
Electric parking brake  
Electric power-assisted steering  
Front and rear stabilizer bars  
Front-wheel drive (FWD)  
Hill start assist  
Suspension – Front: independent MacPherson strut;  
rear: independent multilink  
Torque Vectoring Control

### Interior

12-volt powerpoints (3)  
Dome light with map lights  
Driver and front-passenger sun visors  
with illuminated vanity mirrors  
Ford SYNC® voice-activated, in-vehicle  
connectivity system  
Full center console with armrest and storage  
Illuminated, lockable glove compartment  
Message center with trip computer  
Power door locks  
Power windows with global open/close  
and one-touch-up-/down feature  
Rear view camera  
Steering wheel-mounted cruise, audio  
and 5-way MyFord® controls  
Tilt/telescoping steering column

### Exterior

Automatic halogen projector beam headlamps  
Chrome grille  
Configurable daytime running lamps  
Easy Fuel® capless fuel filler  
LED taillamps  
Rear-window defroster  
Solar-tinted glass  
Speed-sensitive windshield wipers

### Safety & Security

Personal Safety System™ for driver and front  
passenger includes dual-stage front airbags<sup>2</sup>; safety  
belt pretensioners, safety belt energy-management  
retractors, safety belt usage sensors, driver's seat  
position sensor, crash severity sensor, restraint control  
module and Front-Passenger Sensing System  
Driver and front-passenger knee airbags<sup>2</sup>  
Front-seat side airbags<sup>2</sup>  
Side-curtain airbags<sup>2</sup>  
3-point safety belts for all 5 seating positions  
AdvanceTrac® electronic stability control  
with brake-actuated traction control  
Anti-theft perimeter alarm  
Belt-Minder® front safety belt reminder  
Child-safety rear door locks  
Emergency in-trunk release handle  
Illuminated Entry System  
LATCH – Lower Anchors and Tether Anchors for Children  
MyKey®  
SecuriLock® Passive Anti-Theft System  
SOS Post-Crash Alert System™  
Tire Pressure Monitoring System (excludes spare)

<sup>1</sup>Dimensions may vary by trim level.

<sup>2</sup>Using 93-octane fuel. <sup>3</sup>Always wear your safety belt and secure children in the rear seat.



SE. Ebony cloth trim with red stitching. Appearance Package. Available equipment.

MyFord 4.2" color LCD center stack display.

60/40 split fold-flat rear seat.

EasyFuel® capless fuel filler.

## S

### Equipment Group 100A

Includes all standard features, plus:

#### Mechanical

- 2.5L iVCT I-4 engine
- 6-speed SelectShift® automatic transmission with thumb switch operation
- Compact spare

#### Seating

- 6-way manual driver's seat
- 4-way manual front-passenger seat
- 4-way adjustable front head restraints
- 60/40 split fold-flat spring-assisted rear seat
- Cloth seating

#### Interior

- AM/FM stereo/single-CD player with MP3 capability and 4 speakers
- Cruise control
- Day/night rearview mirror
- Front carpeted floor mats
- Single-zone manual air conditioning
- SYNC® with MyFord® voice-activated, in-vehicle connectivity system with 4.2" color LCD displays in instrument cluster and center stack; SYNC AppLink™; and media hub with USB port

#### Exterior

- 16" painted aluminum wheels with 215/60R16 all-season tires
- Black rocker moldings
- Body-color door handles
- Body-color, power sideview mirrors with integrated blind spot mirrors
- Single exhaust with bright tip

#### Available Options

- All-weather floor mats
- Inflatable rear safety belts in outboard seating positions
- Remote Start System
- Trunk cargo net

## SE

### Equipment Group 200A

Includes select S features, plus:

#### Seating

- 10-way power driver's seat including power lumbar
- 6-way power front-passenger seat with fore/aft/up/down adjustment and power recline
- Rear-seat fold-down center armrest with 2 cupholders

#### Interior

- AM/FM stereo/single-CD player with MP3 capability and 6 speakers
- Compass
- Outside temperature display
- Rear climate ducts
- Rear carpeted floor mats
- SiriusXM® Satellite Radio with 6-month trial subscription

#### Exterior

- 17" Sparkle Silver-painted aluminum wheels with 235/50R17 all-season tires
- Body-color, power, heated sideview mirrors with security approach lamps and integrated turn signal indicators and blind spot mirrors
- Body-color rocker moldings
- SecuriCode™ invisible keypad

#### Available Equipment Groups

**Equipment Group 201A – Appearance Package** includes 18" 5-spoke premium painted aluminum wheels with 235/45R18 all-season tires; rear decklid spoiler; fog lamps; leather-wrapped steering wheel; Ebony EcoCloth interior with contrasting red stitching on center console and seats (n/a with Auto Start-Stop)

**Equipment Group 202A – Luxury Package** includes 1.5L EcoBoost® I-4 engine; driver's seat memory feature; heated front seats; leather-trimmed seats, steering wheel and shift knob; auto-dimming rearview mirror; fog lamps; chrome moldings around door windows; and power, heated sideview mirrors with memory, security approach lamps, auto-dimming driver's side, and integrated turn signal indicators and blind spot mirrors

#### Available Options & Packages

- 1.5L EcoBoost I-4 engine with 6-speed SelectShift automatic transmission
- 1.5L EcoBoost I-4 engine with 6-speed SelectShift automatic transmission and Auto Start-Stop (requires 17" wheels; n/a with 201A)

2.0L EcoBoost I-4 engine and 6-speed SelectShift automatic transmission with paddle shifters; includes dual integrated bright exhaust tips (requires 201A or 202A and 18" wheels)

- 18" Gloss Black aluminum wheels (requires 202A; n/a with Terracotta Package)
- 18" premium Luster Nickel-painted aluminum wheels (requires 202A; n/a with Terracotta Package)
- 18" summer-only tires<sup>1</sup> (requires 2.0L engine; n/a with Terracotta Package)

Active park assist with Forward Sensing System (requires 202A and SE MyFord Touch® Technology Package)

Adaptive cruise control and collision warning with brake support (requires 202A, 2.0L engine and SE MyFord Touch Technology Package)

All-weather floor mats

Heated steering wheel (requires 202A and SE MyFord Touch Technology Package; n/a with manual transmission)

Inflatable rear safety belts in outboard seating positions

Intelligent Access with push-button start and Remote Start System (requires 202A and SE MyFord Touch Technology Package)

Intelligent all-wheel drive (AWD) (requires 201A or 202A, 2.0L EcoBoost engine and 18" wheels)

Power moonroof with universal garage door opener

Premium carpeted front and rear floor mats, plus trunk mat (n/a with Terracotta Package)

Remote Start System

Reverse Sensing System

**SE Luxury Driver Assist Package** includes BLIS® (Blind Spot Information System) with cross-traffic alert, Lane-Keeping System, auto high beams, rain-sensing windshield wipers, and 110-volt power outlet (requires 202A and SE MyFord Touch Technology Package)

**SE MyFord Touch Technology Package** includes SYNC with MyFord Touch voice-activated, in-vehicle connectivity system, which includes SYNC Services;<sup>2</sup> 2 configurable 4.2" color LCD displays in instrument cluster, 8" color LCD touch screen in center stack, and media hub with 2 USB ports, SD card reader and audio/video input jacks; Reverse Sensing System; and dual-zone electronic automatic temperature control

**Terracotta Package** includes Terracotta premium leather-trimmed seats and vinyl door-trim inserts, premium carpeted front and rear floor mats, and 18" 5-spoke machined and painted aluminum wheels (requires 202A; n/a with Auto Start-Stop)

Trunk cargo net

Voice-activated Navigation System with integrated SiriusXM Traffic and Travel Link® with 5-year subscription (requires SE MyFord Touch Technology Package)

<sup>1</sup>Ford does not recommend using summer tires when temperatures drop to approximately 40°F or below (depending on tire wear and environmental conditions) or in snow/ice conditions. If the vehicle must be driven in these conditions, Ford recommends using all-season or winter tires. <sup>2</sup>SYNC Services varies by trim level and model year and may require a subscription. Traffic alerts and turn-by-turn directions available in select markets. Message and data rates may apply. Ford Motor Company reserves the right to change or discontinue this product service at any time without prior notification or incurring any future obligation.



16" Painted Aluminum  
Standard: S



17" Sparkle Silver-Painted  
Aluminum  
Standard: SE



18" Gloss Black Aluminum  
Optional: SE



18" Premium Luster Nickel-  
Painted Aluminum  
Optional: SE



18" 5-Spoke Premium  
Painted Aluminum  
Included: Appearance Package



18" 5-Spoke Machined  
and Painted Aluminum  
Included: Terracotta Package

# Titanium

## Equipment Group 300A

Includes select SE features, plus:

### Mechanical

2.0L EcoBoost® I-4 engine

6-speed SelectShift® automatic transmission with steering-wheel mounted paddle shifters

### Seating

Leather-trimmed Sport seats with 10-way power, heated front seats and driver's side memory with 3 settings

### Interior

Aluminum brake and accelerator pedal covers

Aluminum front-door sill plates

Ambient lighting

Audio System from Sony® with AM/FM stereo/single-CD player with MP3 capability, 12 speakers in 10 locations and HD Radio™ Technology

Auto-dimming rearview mirror

Dual-zone electronic automatic temperature control

Intelligent Access with push-button start and Remote Start System (2 key fob transmitters)

Leather-wrapped steering wheel and shift knob

SYNC® with MyFord Touch® voice-activated, in-vehicle connectivity system, which includes SYNC Services<sup>1</sup>; 2 configurable 4.2" color LCD displays in instrument cluster; 8" color LCD touch screen in center stack; and media hub with 2 USB ports, SD card reader and audio/video input jacks

### Exterior

18" polished face wheels with Flash Gray-painted pockets and 235/45R18 all-season tires

Body-color door handles with chrome inserts

Body-color, power, heated sideview mirrors with memory, security approach lamps, auto-dimming driver's side, and integrated turn signal indicators and blind spot mirrors

Dual integrated bright exhaust tips

Fog lamps

Rear decklid spoiler

Reverse Sensing System

### Available Options & Packages

18" summer-only tires<sup>2</sup> (requires AWD; n/a with Terracotta Package)

19" H-spoke dark stainless-painted aluminum wheels and 235/40R19 all-season tires (n/a with Terracotta Package)

Active park assist with Forward Sensing System

Adaptive cruise control and collision warning with brake support

All-weather floor mats

**Brick Red Leather Package** includes Brick Red premium leather-trimmed seats and vinyl door-trim inserts, premium carpeted front and rear floor mats, and 18" 5-spoke machined and painted aluminum wheels

Cooled front seats

Heated steering wheel

Inflatable rear safety belts in outboard seating positions

Intelligent all-wheel drive (AWD)

Power moonroof with universal garage door opener

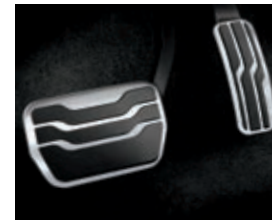
Premium carpeted front and rear floor mats, plus trunk mat (n/a with Brick Red Leather Package or Terracotta Package)

**Terracotta Package** includes Terracotta premium leather-trimmed seats and vinyl door-trim inserts, premium carpeted front and rear floor mats, and 18" 5-spoke machined and painted aluminum wheels

**Titanium Driver Assist Package** includes BLIS® (Blind Spot Information System) with cross-traffic alert, Lane-Keeping System, auto high beams, rain-sensing windshield wipers, and 110-volt power outlet

Trunk cargo net

Voice-activated Navigation System with integrated SiriusXM® Traffic and Travel Link® with 5-year subscription



Terracotta premium leather trim with perforated inserts. Terracotta Package. Available equipment.

Intelligent Access with push-button start.

Aluminum brake and accelerator pedal covers.

Audio System from Sony with HD Radio Technology and iTunes® tagging.

Steering wheel-mounted paddle shifters.



18" Polished Face with Flash Gray-Painted Pockets  
Standard



18" 5-Spoke Machined and Painted Aluminum  
Included: Brick Red Leather Package and Terracotta Package



19" H-Spoke Dark Stainless-Painted Aluminum  
Optional

<sup>1</sup>SYNC Services varies by trim level and model year and may require a subscription. Traffic alerts and turn-by-turn directions available in select markets. Message and data rates may apply. Ford Motor Company reserves the right to change or discontinue this product service at any time without prior notification or incurring any future obligation. <sup>2</sup>Ford does not recommend using summer tires when temperatures drop to approximately 40°F or below (depending on tire wear and environmental conditions) or in snow/ice conditions. If the vehicle must be driven in these conditions, Ford recommends using all-season or winter tires.



SmartGauge with EcoGuide instrument cluster. Available equipment.

110-volt power outlet<sup>1</sup>

Climate control screen on SYNC with MyFord Touch<sup>2</sup>

"Efficiency Leaves" on SmartGauge with EcoGuide instrument cluster.

## Hybrid S

### Equipment Group 400A

Includes select S features, plus:

#### Mechanical

2.0L iVCT Atkinson-cycle I-4 HEV engine with permanent-magnet AC-synchronous electric motor  
Electronically controlled continuously variable transmission (eCVT)  
Lithium-Ion Battery Pack System  
Regenerative Braking System  
Tire mobility kit in lieu of spare tire

#### Seating

Unique EcoCloth seats with REPVEVE<sup>®</sup> fabric

#### Interior

Active noise cancellation  
AM/FM stereo/single-CD player with MP3 capability and 6 speakers  
Dual-zone electronic automatic temperature control  
Front carpeted floor mats  
SmartGauge<sup>®</sup> with EcoGuide

#### Exterior

17" 15-spoke Sparkle Silver-painted aluminum wheels with P225/50R17 all-season tires  
Single bright exhaust tip

#### Available Options

All-weather floor mats  
Inflatable rear safety belts in outboard seating positions  
Remote Start System  
Trunk cargo net

## Hybrid SE

### Equipment Group 500A

Includes select Hybrid S features, plus:

#### Seating

10-way power driver's seat including power lumbar  
6-way power front-passenger seat with fore/aft/up/down adjustment and power recline

#### Interior

Compass  
Outside temperature display  
Rear climate ducts  
Rear carpeted floor mats  
SiriusXM<sup>®</sup> Satellite Radio with 6-month trial subscription

#### Exterior

Body-color, power, heated sideview mirrors with security approach lamps and integrated turn signal indicators and blind spot mirrors  
Body-color rocker moldings  
SecuriCode<sup>™</sup> invisible keypad

#### Available Equipment Groups

**Equipment Group 501A – Appearance Package** includes 17" 10-spoke painted aluminum wheels; rear decklid spoiler; fog lamps; leather-wrapped steering wheel; and Ebony EcoCloth interior with contrasting red stitching on center console and seats

**Equipment Group 502A – Luxury Package** includes driver's seat memory feature; heated front seats; leather-trimmed seats, steering wheel and shift knob; auto-dimming rearview mirror; fog lamps; chrome moldings around door windows; and power, heated sideview mirrors with memory, security approach lamps, auto-dimming driver's side, and integrated turn signal indicators and blind spot mirrors

#### Available Options & Packages

Active park assist with Forward Sensing System (requires 502A and SE MyFord Touch<sup>®</sup> Technology Package)

Adaptive cruise control and collision warning with brake support (requires SE MyFord Touch Technology Package; n/a on 500A)

All-weather floor mats

Heated steering wheel (requires 502A and SE MyFord Touch Technology Package)

Inflatable rear safety belts in outboard seating positions  
Intelligent Access with push-button start and Remote Start System (requires 502A and SE MyFord Touch Technology Package)

Power moonroof with universal garage door opener

Premium carpeted front and rear floor mats, plus trunk mat (n/a with Terracotta Package)

Remote Start System

Reverse Sensing System

**SE Luxury Driver Assist Package** includes BLIS<sup>®</sup> (Blind Spot Information System) with cross-traffic alert, Lane-Keeping System, auto high beams, 110-volt power outlet and rain-sensing windshield wipers (requires 502A and SE MyFord Touch Technology Package)

**SE MyFord Touch Technology Package** includes SYNC<sup>®</sup> with MyFord Touch voice-activated, in-vehicle connectivity system, which includes SYNC Services<sup>2</sup>; 2 configurable 4.2" color LCD displays in instrument cluster; 8" color LCD touch screen in center stack; and media hub with 2 USB ports, SD card reader and audio/video input jacks; Reverse Sensing System; and 110-volt power outlet

**Terracotta Package** includes Terracotta premium leather-trimmed seats and vinyl door-trim inserts, and premium carpeted front and rear floor mats (requires 502A)

Trunk cargo net

Voice-activated Navigation System with integrated SiriusXM Traffic and Travel Link<sup>®</sup> with 5-year subscription (requires SE MyFord Touch Technology Package)

## Hybrid Titanium

### Equipment Group 600A

Includes select Hybrid SE features, plus:

#### Seating

Leather-trimmed Sport seats with 10-way power, heated front seats and driver's side memory with 3 settings

#### Interior

110-volt power outlet  
Aluminum brake and accelerator pedal covers  
Aluminum front-door sill plates  
Ambient lighting  
Audio System from Sony<sup>®</sup> with AM/FM stereo/single-CD player with MP3 capability, 12 speakers in 10 locations and HD Radio<sup>™</sup> Technology

Auto-dimming rearview mirror

Intelligent Access with push-button start and Remote Start System (2 key fob transmitters)

Leather-wrapped steering wheel and shift knob  
SYNC with MyFord Touch voice-activated, in-vehicle connectivity system, which includes SYNC Services<sup>2</sup>; 2 configurable 4.2" color LCD displays in instrument cluster; 8" color LCD touch screen in center stack; and media hub with 2 USB ports, SD card reader and audio/video input jacks

#### Exterior

17" 10-spoke painted aluminum wheels

Body-color door handles with chrome inserts

Body-color, power, heated sideview mirrors with memory, security approach lamps, auto-dimming driver's side, and integrated turn signal indicators and blind spot mirrors

Fog lamps

Rear decklid spoiler

Reverse Sensing System

#### Available Options & Packages

Active park assist with Forward Sensing System

Adaptive cruise control and collision warning with brake support

All-weather floor mats

**Brick Red Leather Package** includes Brick Red premium leather-trimmed seats and vinyl door-trim inserts, and premium carpeted front and rear floor mats

Cooled front seats

Heated steering wheel

Inflatable rear safety belts in outboard seating positions

Power moonroof with universal garage door opener  
Premium carpeted front and rear floor mats, plus trunk mat (n/a with Brick Red Leather Package or Terracotta Package)

#### Terracotta Package

**Titanium Driver Assist Package** includes BLIS (Blind Spot Information System) with cross-traffic alert, Lane-Keeping System, auto high beams, and rain-sensing windshield wipers

Trunk cargo net

Voice-activated Navigation System with integrated SiriusXM Traffic and Travel Link<sup>®</sup> with 5-year subscription



17" 15-Spoke Sparkle Silver-painted Aluminum  
Standard: Hybrid S & Hybrid SE



17" 10-Spoke Painted Aluminum  
Standard: Hybrid Titanium  
Included: Appearance Package

<sup>1</sup>Available feature. <sup>2</sup>SYNC Services varies by trim level and model year and may require a subscription. Traffic alerts and turn-by-turn directions available in select markets. Message and data rates may apply. Ford Motor Company reserves the right to change or discontinue this product service at any time without prior notification or incurring any future obligation.



## Fusion Energi SE

**Equipment Group 700A**  
Includes select Hybrid SE features, plus:

### Mechanical

2.0L iVCT Atkinson-cycle I-4 PHEV engine with permanent-magnet AC-synchronous electric motor  
7.6 kWh Lithium-Ion Battery Pack System  
120-volt convenience charge cord

### Seating

6-way power front-passenger seat with fore/aft/up/down adjustment and power recline  
Leather-trimmed seats with heated front seats and driver's side memory with 3 settings

### Interior

110-volt power outlet  
EV Mode button with EV Now, EV Later and EV Auto  
Leather-wrapped steering wheel and shift knob  
MyFord® Mobile app with 5-year service agreement  
SYNC® with MyFord Touch® voice-activated, in-vehicle connectivity system, which includes SYNC Services<sup>1</sup>;  
2 configurable 4.2" color LCD displays in instrument cluster; 8" color LCD touch screen in center stack; and media hub with 2 USB ports, SD card reader and audio/video input jacks

### Exterior

17" 15-spoke Sparkle Silver-painted aluminum wheels with P225/50VR17 all-season tires  
Body-color, power, heated sideview mirrors with memory, security approach lamps, auto-dimming driver's side, and integrated turn signal indicators and blind spot mirrors  
External charge port with LED-illuminated state-of-charge indicator  
Fog lamps  
Reverse Sensing System  
Tire mobility kit (in lieu of spare tire)

### Available Options & Package

Active park assist with Forward Sensing System  
Adaptive cruise control and collision warning with brake support  
All-weather floor mats  
Charge cord bag by THULE®<sup>2</sup>  
Charge door decal  
**Driver Assist Package** includes BLIS® (Blind Spot Information System) with cross-traffic alert, Lane-Keeping System, auto high beams, and rain-sensing windshield wipers  
Heated steering wheel  
Inflatable rear safety belts in outboard seating positions  
Intelligent Access with push-button start and Remote Start System  
Power moonroof with universal garage door opener  
Premium carpeted front and rear floor mats  
Trunk cargo net  
Voice-activated Navigation System with integrated SiriusXM® Traffic and Travel Link® with 5-year subscription

## Fusion Energi Titanium

**Equipment Group 800A**  
Includes select Fusion Energi SE features, plus:

### Seating

10-way power front-passenger seat

### Interior

Aluminum brake and accelerator pedal covers  
Aluminum front-door sill plates  
Ambient lighting  
Audio System from Sony® with AM/FM stereo/single-CD player with MP3 capability, 12 speakers in 10 locations and HD Radio™ Technology  
Intelligent Access with push-button start and Remote Start System (2 key fob transmitters)

### Exterior

17" 10-spoke painted aluminum wheels  
Body-color door handles with chrome inserts  
Rear decklid spoiler

### Available Options & Packages

Active park assist with Forward Sensing System  
Adaptive cruise control and collision warning with brake support  
All-weather floor mats  
**Brick Red Leather Package** includes Brick Red premium leather-trimmed seats and vinyl door-trim inserts, and premium carpeted front and rear floor mats

Charge cord bag by THULE<sup>2</sup>  
Charge door decal  
Cooled front seats  
Heated steering wheel  
Inflatable rear safety belts in outboard seating positions  
Power moonroof with universal garage door opener  
Premium carpeted front and rear floor mats (n/a with Brick Red Leather Package)

**Titanium Driver Assist Package** includes BLIS (Blind Spot Information System) with cross-traffic alert, Lane-Keeping System, auto high beams, and rain-sensing windshield wipers

Trunk cargo net  
Voice-activated Navigation System with integrated SiriusXM Traffic and Travel Link with 5-year subscription



Titanium. Charcoal Black leather trim with perforated inserts. Available equipment.

LED-illuminated charge port.

Energy flow screen.

240-volt electric charging station by AeroVironment.<sup>3</sup>



17" 15-Spoke Sparkle Silver-Painted Aluminum  
Standard: Fusion Energi SE



17" 10-Spoke Painted Aluminum  
Standard: Fusion Energi Titanium

<sup>1</sup>SYNC Services varies by trim level and model year and may require a subscription. Traffic alerts and turn-by-turn directions available in select markets. Message and data rates may apply. Ford Motor Company reserves the right to change or discontinue this product service at any time without prior notification or incurring any future obligation. <sup>2</sup>Ford Licensed Accessory. <sup>3</sup>Available feature. Third-party installation required.

## Exteriors



White Platinum Tri-coat Metallic



Oxford White



Ingot Silver



Ruby Red Tinted Clearcoat Metallic



Bronze Fire Tinted Clearcoat Metallic



Deep Impact Blue



Tectonic



Magnetic



Guard

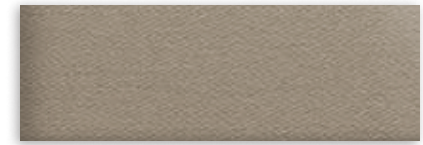


Tuxedo Black

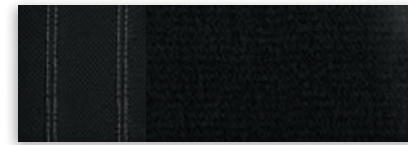
## Interiors



1 Earth Gray Cloth



2 Dune Cloth



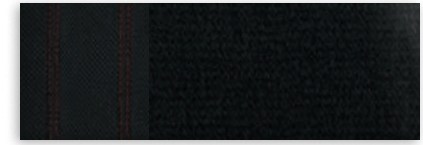
3 Ebony Cloth



4 Dune Leather



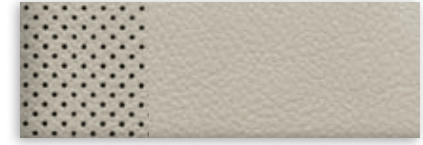
5 Charcoal Black Leather



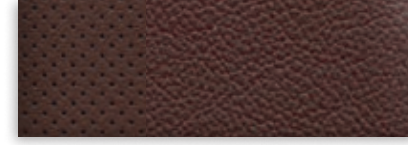
6 Ebony Cloth with Red Stitching



7 Charcoal Black Leather with Perforated Inserts



8 Medium Soft Ceramic Leather with Perforated Inserts



9 Terracotta Premium Leather with Perforated Inserts



10 Brick Red Premium Leather with Perforated Inserts

Exteriors	Interiors																										
	S	SE					Titanium	Hybrid S	Hybrid SE					Hybrid Titanium	Fusion Energi SE	Fusion Energi Titanium											
White Platinum Tri-coat Metallic <sup>1</sup>		2	3	4	5	6	9	7	8	9	10		2	3	4	5	6	9	7	8	9	10	4	5	7	8	10
Oxford White	1	2	3	4	5	6	9	7	8	9	10	1	2	3	4	5	6	9	7	8	9	10	4	5	7	8	10
Ingot Silver	1	2	3	4	5	6	9	7	8	9	10	1	3	4	5	6	9	7	8	9	10	4	5	7	8	10	
Ruby Red Tinted Clearcoat Metallic <sup>1</sup>	1	2	3	4	5	6	7	8	1	2	3	4	5	6	7	8	4	5	7	8	4	5	7	8			
Bronze Fire Tinted Clearcoat Metallic <sup>1</sup>	1	2	3	4	5	6	9	7	8	9	1	2	3	4	5	6	9	7	8	9	4	5	7	8			
Deep Impact Blue	1	2	3	4	5	6	7	8	1	2	3	4	5	6	7	8	4	5	7	8	4	5	7	8			
Tectonic	1	2	3	4	5	6	9	7	8	9	10	1	2	3	4	5	6	9	7	8	9	10	4	5	7	8	10
Magnetic	1	2	3	4	5	6	9	7	8	9	10	1	2	3	4	5	6	9	7	8	9	10	4	5	7	8	10
Guard	1	2	3	4	5	6	7	8	1	2	3	4	5	6	7	8	4	5	7	8	4	5	7	8			
Tuxedo Black	1	2	3	4	5	6	9	7	8	9	10	1	2	3	4	5	6	9	7	8	9	10	4	5	7	8	10

4, 5 Luxury Package on SE and Hybrid SE 6 Appearance Package on SE and Hybrid SE 9 Terracotta Package on SE, Titanium, Hybrid SE and Hybrid Titanium  
10 Brick Red Leather Package on Titanium, Hybrid Titanium and Fusion Energi Titanium

<sup>1</sup>Additional charge.  
Colors are representative only. See your dealer for actual paint/trim options.

Bring these colors to life





SE in Ruby Red Tinted Clearcoat Metallic accessorized with 18" Sparkle Nickel-painted aluminum wheels, molded splash guards, smoked side window deflectors and rear decklid spoiler

Illuminated door sill plates

All-weather floor mats

Remote Access

Roof rack and roof-mounted bike carrier by THULE®<sup>1</sup>

#### Exterior

- Body kit<sup>1,2</sup>
- Flat splash guards
- Full vehicle covers<sup>1</sup>
- Hood protector<sup>1</sup>
- Racks and carriers<sup>1</sup>
- Rear bumper protector
- Rear spoiler<sup>1</sup>
- Wheel lock kit

#### Interior

- Ash cup/coin holders
- Auto-dimming rearview mirror
- Cargo organizers and protectors
- Carpeted floor mats
- Charge cord bag<sup>1,3</sup>
- Charge door decal<sup>3</sup>
- Interior light kit
- Stainless steel door sill plates
- Tablet cradle<sup>1</sup>

#### Electronics

- Bumper-mounted warning sensor systems<sup>1</sup>
- Keyless entry keypad
- Portable DVD rear-seat entertainment systems<sup>1</sup>
- Remote start systems
- Vehicle Security System
- Wireless charging<sup>1</sup>

Learn more about  
your Fusion



2015  
**FUSION+HYBRID  
FUSION ENERGI**



Go Further

[ford.com](http://ford.com)

**New Vehicle Limited Warranty.** We want your Ford Fusion ownership experience to be the best it can be. Under this warranty, your new vehicle comes with 3-year/36,000-mile bumper-to-bumper coverage, 5-year/60,000-mile Powertrain Warranty coverage, 5-year/60,000-mile safety restraint coverage, and 5-year/unlimited-mile corrosion (perforation) coverage – all with no deductible. Fusion unique electric components are covered during the Hybrid/Electric Unique Component Coverage, which lasts for 8 years or 100,000 miles, whichever occurs first. Please ask your Ford Dealer for a copy of this limited warranty.

**Roadside Assistance.** Covers your vehicle for 5 years or 60,000 miles, so you have the security of knowing that help may be only a phone call away should you run out of fuel, lock yourself out of the vehicle or need towing. Your Ford Dealer can provide complete details on all of these advantages.

**Ford Credit.** Get the ride you want. Whether you plan to lease or finance, you'll find the choices that are right for you at Ford Credit. Ask your Ford Dealer for details or check us out at [fordcredit.com](http://fordcredit.com).

**Ford Extended Service Plan.** For a purchase or lease, the Ford Extended Service Plan (ESP) gives you peace-of-mind protection designed to cover key vehicle components and protect you from the cost of unexpected repairs. Ask your dealer for a Ford ESP, the only service contract backed exclusively by Ford and honored at all Ford Lincoln dealerships.

**Insurance Services.** Get Ford Motor Company quality in your auto insurance. Our program offers industry-leading benefits and competitive rates. Call 1-877-367-3847, or visit us at [fordvip.com](http://fordvip.com) for a no-obligation quote. Insurance offered by American Road Services Company (in CA, American Road Insurance Agency), a licensed agency and subsidiary of Ford Motor Company.

**Ford Original Accessories** will be warranted for whichever provides you the greatest benefit: 24 months/unlimited mileage, or the remainder of your Bumper-to-Bumper 3-year/36,000-mile New Vehicle Limited Warranty. Ford Licensed Accessories (FLA) are warranted by the accessory manufacturer's warranty. FLA are designed and developed by the accessory manufacturer and have not been designed or tested to Ford Motor Company engineering requirements. Contact your Ford Dealer for details and/or a copy of all limited warranties.

Comparisons based on competitive models (Fusion class is Midsize Sedans; Fusion Hybrid class is Midsize Hybrid Sedans; Fusion Energi class is Midsize Plug-In Hybrid Sedans), publicly available information and Ford certification data at time of release. Vehicles may be shown with optional equipment. Features may be offered only in combination with other options or subject to additional ordering requirements/limitations. Dimensions shown may vary due to optional features and/or production variability. Information is provided on an "as is" basis and could include technical, typographical or other errors. Ford makes no warranties, representations, or guarantees of any kind, express or implied, including but not limited to, accuracy, currency, or completeness, the operation of the information, materials, content, availability, and products. Ford reserves the right to change product specifications, pricing and equipment at any time without incurring obligations. Your Ford Dealer is the best source of the most up-to-date information on Ford vehicles.

After trial period expires, SiriusXM Satellite Radio, SiriusXM Traffic and Travel Link subscriptions are sold separately or as a package and are continuous until you call SiriusXM to cancel. See SiriusXM Customer Agreement for complete terms at [www.siriusxm.com](http://www.siriusxm.com). SiriusXM Traffic and Travel Link available in select markets. For more information, see [www.siriusxm.com/travellink](http://www.siriusxm.com/travellink) or [www.siriusxm.com/traffic](http://www.siriusxm.com/traffic). Sirius, XM and all related marks and logos are trademarks of Sirius XM Radio Inc. HD Radio is a proprietary trademark of iBiquity Digital Corp. iHeartAuto is a trademark owned by Clear Channel Broadcasting, Inc. All third party uses are authorized under license. iPod and iTunes are trademarks of Apple Inc., registered in the U.S. and other countries. PANDORA, the PANDORA logo, and the Pandora trade dress are trademarks or registered trademarks of Pandora Media, Inc. Used with permission. REPREVE is a registered trademark of Unifi, Inc. Sony is a registered trademark of the Sony Corporation. The Bluetooth word mark is a trademark of the Bluetooth SIG, Inc. THULE is a registered trademark of Thule Sweden AB.

Follow Ford:

